

February 17, 2016

**Attention:** Tanya Francis  
TECHNICAL STANDARDS & SAFETY AUTHORITY  
3300 BLOOR STREET WEST  
14 FLOOR CENTRE TOWER  
TORONTO, ON M8X 2X4

The design submission, tracking number 2016-00473, originally received on January 25, 2016 was surveyed and accepted for registration as follows:

**CRN :** 0C18133.52

**Accepted on:** February 17, 2016

**Reg Type:** New Design

**Expiry Date:** December 17, 2025

**Drawing No. :** ATTACHMENT A & B

**Fitting type:** CW SERIES ALL WELDED CHECK VALVES

Design registered in the name of : SWAGELOK COMPANY

**The registration is conditional on your compliance with the following notes:**

*This registration is valid only for fittings fabricated at the location(s) covered by the QC certificate attached to the accepted AB-41 Statutory Declaration form. This registration is valid only until the indicated expiry date only if the Manufacturer maintains a valid quality management system approved by an acceptable third-party agency until that date. Should the approval of the quality management system lapse before the expiry date indicated above, this registration shall become void.*

An invoice covering survey and registration fees will be forwarded from our Revenue Accounts.

Enclosed are stamped prints for your reference.

Sincerely,



ISSA, SAMIR, P. Eng.



the pressure equipment safety authority

STATUTORY DECLARATION  
Registration of Fittings

In this space, show facsimile of manufacturer's logo or trademark as it will appear on the fitting.

Swagelok

I, David H. Peace,

Vice President of Engineering

(company title, e.g. vice president, plant manager, chief engineer) (must be in a position of authority)

of Swagelok Company

(name of manufacturer)

located at Headquarters: 29500 Solon Road, Solon, Ohio 44139 USA (See Attachment A)

(plant address)

do solemnly declare that the fittings listed hereunder, which are subject to the Safety Codes Act (check one)

comply with the requirements of ASME B31.1 and ASME B31.3 which specifies the dimensions, (title of recognized North American Standard)

materials of construction, pressure/temperature ratings and identification marking of the fittings, or

are not covered by the provisions of a recognized North American standard and are therefore manufactured to comply with \_\_\_\_\_ as supported by the attached data which identifies the dimensions, materials of construction, pressure/temperature ratings and the basis for such ratings, and the marking of the fittings for identification.

I further declare that the manufacture of these fittings is controlled by a quality control program which has been verified by the following authority, British Standards Institution as being suitable for the manufacture of these fittings to the stated standard. The fittings covered by this declaration, for which I seek registration, are Category C Type Fittings

In support of this application, the following information, calculations and/or test data are attached:

ISO 9001:2008 Certificate, Support Documents, Attachment B, Catalog Information, Attachment A

DECLARED before me at Solon in the State of Ohio

this 14th day of September, 2015  
(Month) (Year)

(print) Jamie L Ristau

**Jamie L Ristau**  
Resident Portage County  
Notary Public, State of Ohio  
My Commission Expires: 03/06/2019

(Signature of Applicant)

(sign) Jamie L Ristau  
(A Commissioner for Oaths)

For Office Use Only

To the best of my knowledge and belief, the application meets the requirements of the Safety Codes Act and CSA Standard B51, Clause 4.2, and is accepted for registration in Category \_\_\_\_\_

Registration Number: 0C18133 52

Date Registered: FEB 17 2016

(For the Administrator/Chief Inspector of Alberta)

Expiry Date: December 17, 2025

The information you provide is necessary only for the administration of the programs as required by the Alberta Safety Codes Act and Regulations in the Boiler Discipline.

\*Refer to Attachment B for scope of registration. Jamie L Ristau Feb 17, 2016

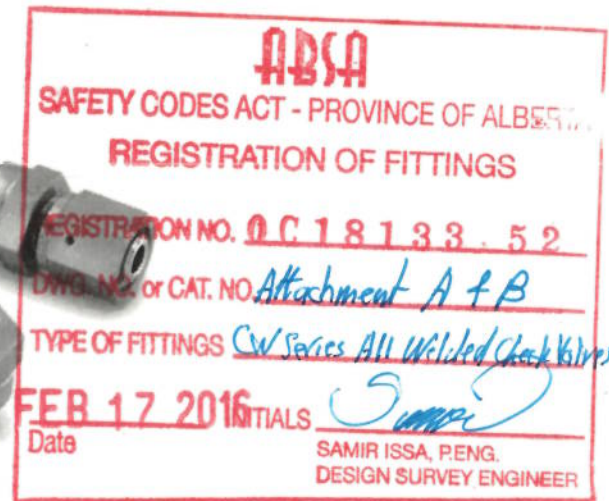
## Attachment B: Scope of CRN Registration for The Swagelok CW Series All-Welded Check Valves (Category C)

This document represents the scope of the CW Series All-Welded Check Valve covered by this submission for CRN approval. The Swagelok CW Series Check Valve was designed and evaluated in accordance with ASME B31.1-2007 for unlisted components and ASME B31.3-2006 for unlisted components.

### Summary Table

Product Description or Series	Main Pressure Bearing Component	Main Pressure Bearing Material (Standard)	Port Connections and Sizes	Maximum Rated Temperature (psig)		Design Code of Construction
				At ambient temperature	At maximum temperature	
CW4	Body	316L Stainless Steel (ASTM A479)	Tube Butt Weld Ends 1/4", 3/8", 1/2", 6MM Female VCR Fittings 1/4", 1/2" Integral Male VCR Fittings 1/4", 1/2" Female/Integral Male VCR Fittings 1/4" Rotatable Male VCR Fittings 1/4" Swagelok Tube Fitting 1/4", 6MM	3000 @ 100 °F	2065 @ 400 °F	ASME B31.1 (Unlisted Components) and ASME B31.3 (Unlisted Components)

### Product Illustration



### Product Options

Some product options could affect the pressure-temperature ratings shown in the Summary Table, but in all cases the ratings are less than those shown in the Summary Table. An example of this would be optional body seal materials.

Additional options that do not affect pressure-temperature ratings may be made available within the scope of this registration. An example of this would be optional poppet springs.

### Quality System

The Swagelok Company quality system complies with the requirements of BS EN ISO 9001:2008. The Swagelok Company maintains British Standards Institution Certificate of Registration Number FM 01729, which applies to all locations listed on the Certificate. The CW Series Check Valve is manufactured at a Swagelok Company location in Solon, Ohio.

### References

The product catalog does not represent the full scope of registration, but rather details some of the most common options.

- CW Series Check Valve Catalog MS-02-89